

# SHEN ZHEN SHI HONBON OPTOELECTRONICS TECH CO.,LTD

Part Number: 5 W 4 V C

Page:1/3

## 1.SPECIFICATIONS

### (1) Absolute Maximum Rating

(Ta=25℃)

Item	Symbol	Absolute Maximum Rating	Unit
Forward Current	IF	20	mA
Peak Forward Current	IFP	50	mA
Reverse Voltage	VR	5	V
Power Dissipation	PD	70	mW
Electrostatic Discharge (HBM)	/	/	V
Operating Temperature	TOP	-40℃~80℃	℃
Storage Temperature	TSTG	-40℃~100℃	℃
Lead Soldering Temperature	TSOL	260℃ FOR 5 SECONDS	

IFP Conditions: Pulse Width≤10msec.and duty ≤1/10

### (2) Initial Electrical/Optical Characteristics

(Ta=25℃)

Item	Symbol	Condition	Min	Typ	Max	Unit
Forward Voltage	VF	IF=20(mA)	3	/	3.7	V
Reverse Current	IR	VR=5(V)	/	/	20	μA
Viewing Angle	2 θ 1/2	IF=20(mA)	/	15	/	deg
Luminous Intensity	IV	IF=20(mA)	22000	/	26000	mcd
Peak Wavelength	x	IF=20(mA)	/	6000	/	xy
Dominant Wavelength	y	IF=20(mA)	/	6500	/	
Recommend Forward Current	IF(Rec)	/	/	20	/	mA

## 2.TYPICAL INITIAL OPTICAL/ELECTRICAL CHARACTERISTICS

## 3.OUTLINE DIMENSIONS AND MATERIALS

Material as follows: Resin :Epoxy

Lead frame:Ag plating Copper alloy

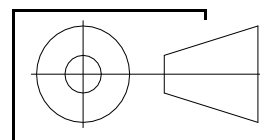
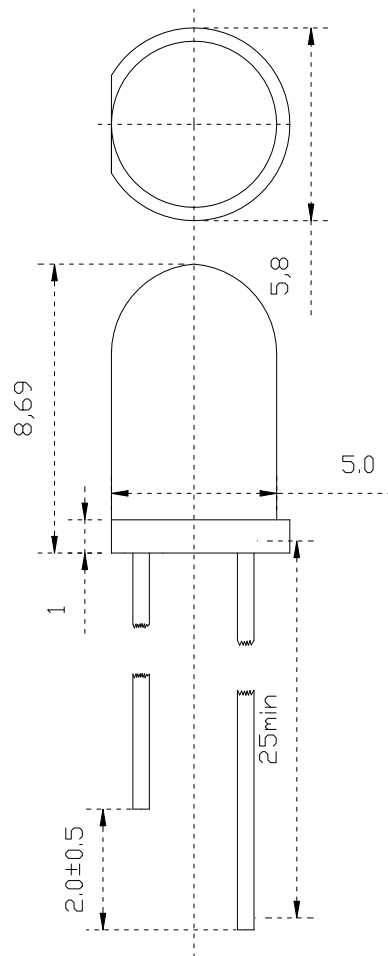
# SHEN ZHEN SHI HONBON OPTOELECTRONICS TECH CO.,LTD

Part Number:

5 W 4 V C

Page2/3

■ Package Dimension:



Part Number	Chip		Lens Color
	Material	Emitting Color	
5 W 4 V C	AlGaInp	White	Milky Water

■ NOTES:

1.All dimension are millimeters

2.Tolerance is ±0.25mm unless otherwise noted.

## ■ Typical Electro-Optical Characteristic Curves:

Fig1.Forward Current vs.Forward Voltage

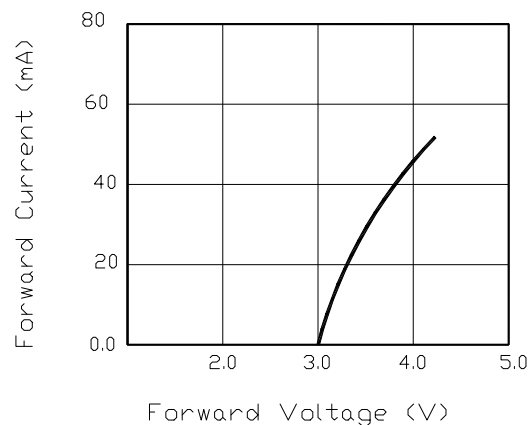


Fig2.Relative Intensity vs. Forward Current

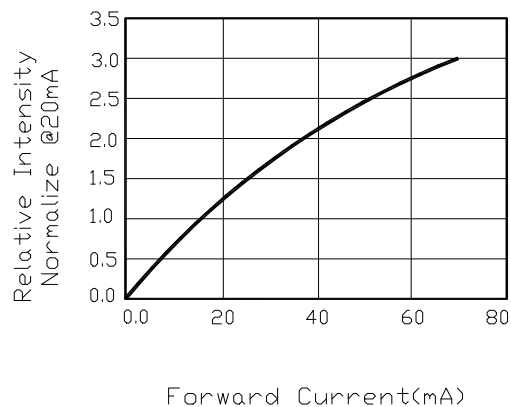


Fig3.Forward Voltage vs. Temperature

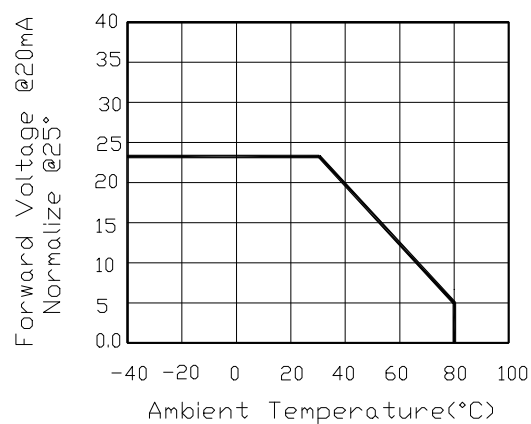


Fig4.Relative Intensity vs. Temperature

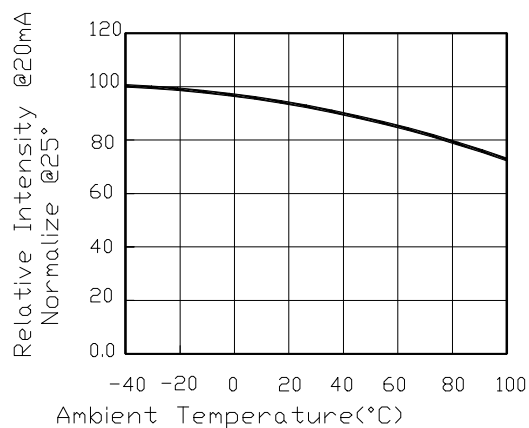


Fig5.Relative Intensity vs. Wavelength

